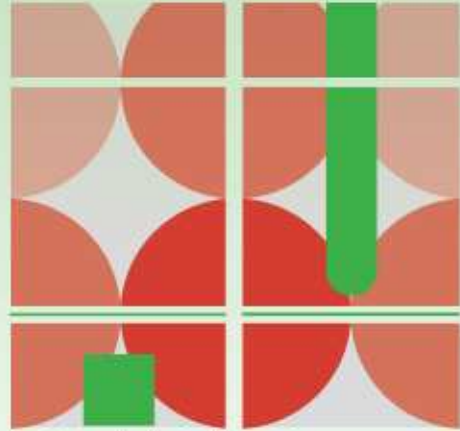


ACNU08



Brisbane

**2008 NATIONAL  
CONGRESS OF THE  
AUSTRALIAN COUNCIL  
FOR NEW URBANISM**

6th – 9th February, 2008





# Busways & TODs

*Barry Gyte 8 February 2008*



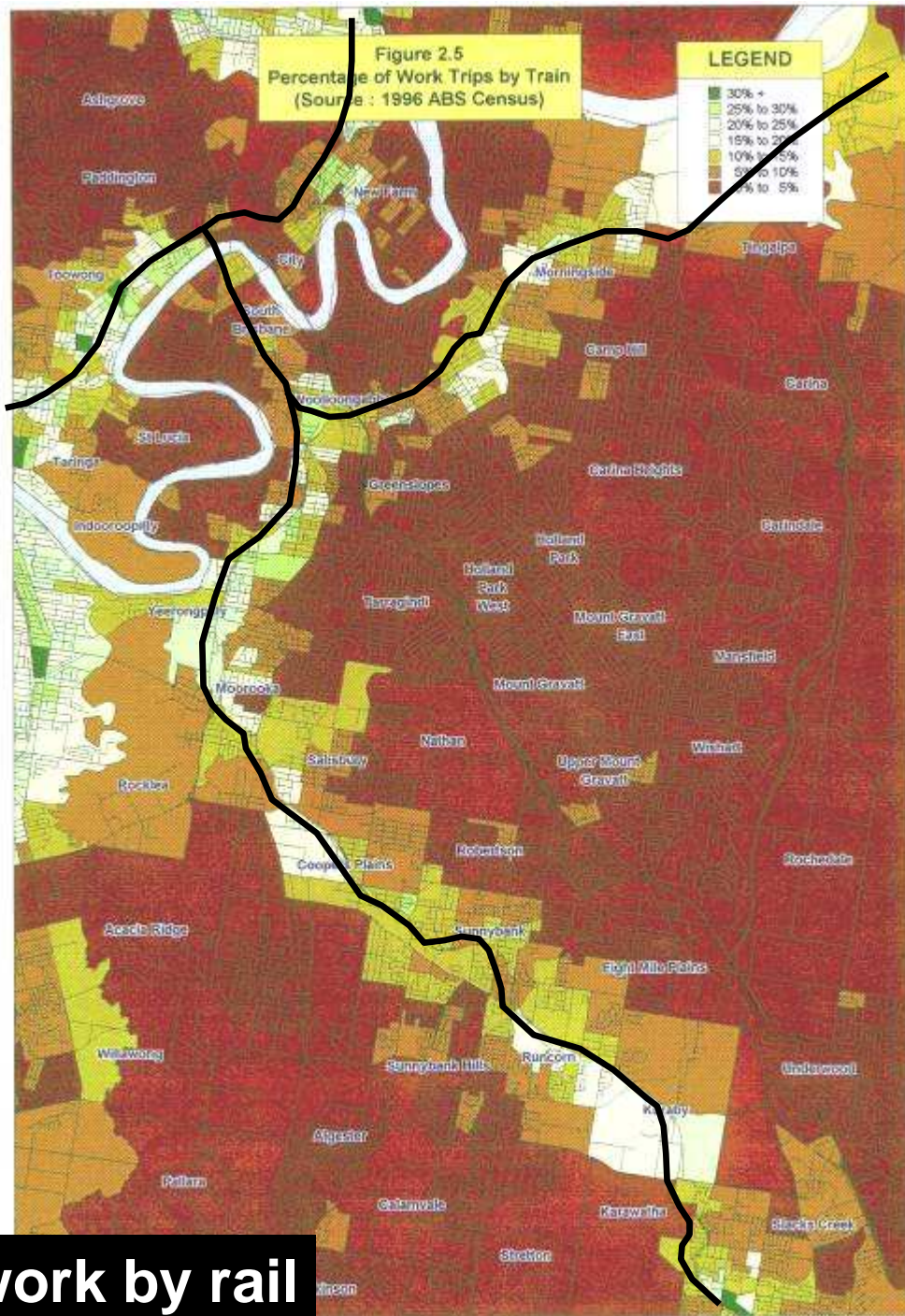






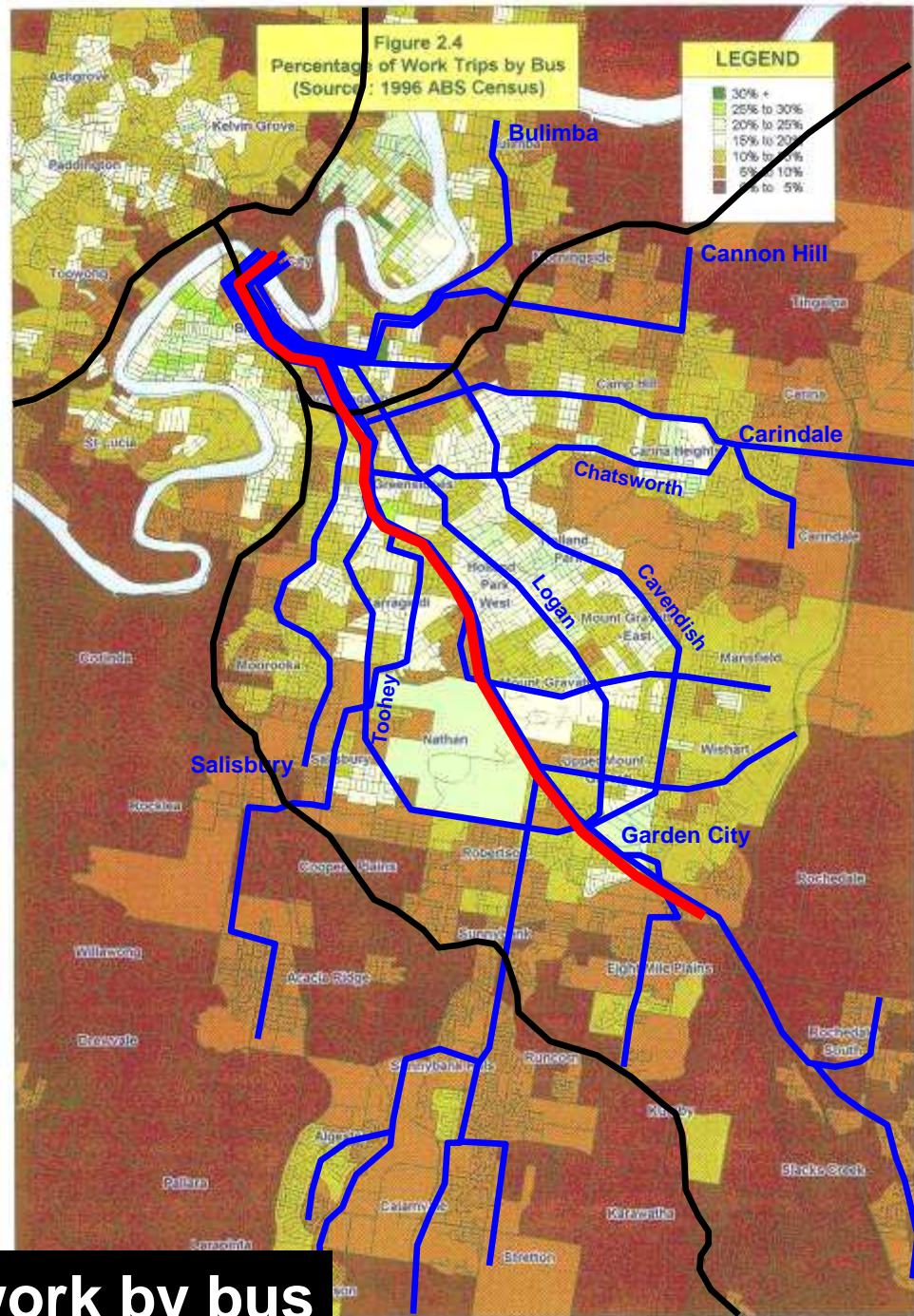






**Journey to work by rail**





**Journey to work by bus**

- 18,000 passengers in one lane in the peak one hour

18,000

One motorway lane carries 1800 cars/hr = 2000 people/hr















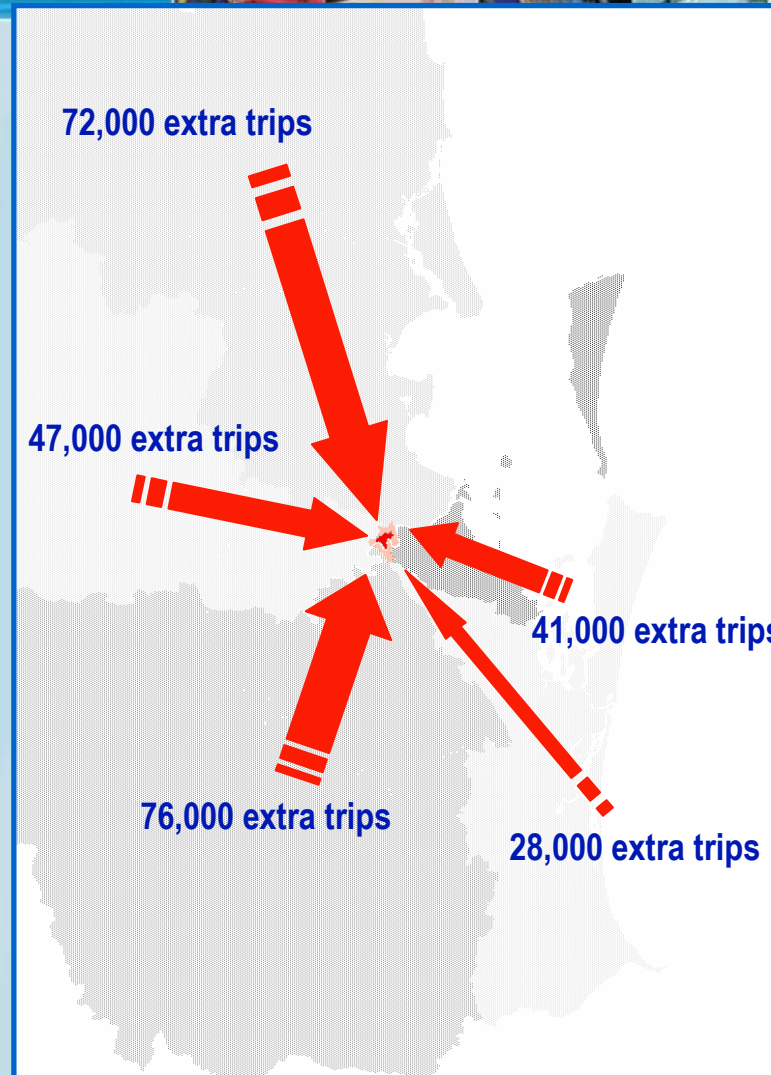


# TransLink busway network





By 2026, two-way trips to the heart of the CBD will increase by more than 80%\*.



\*Based on 2001 figures

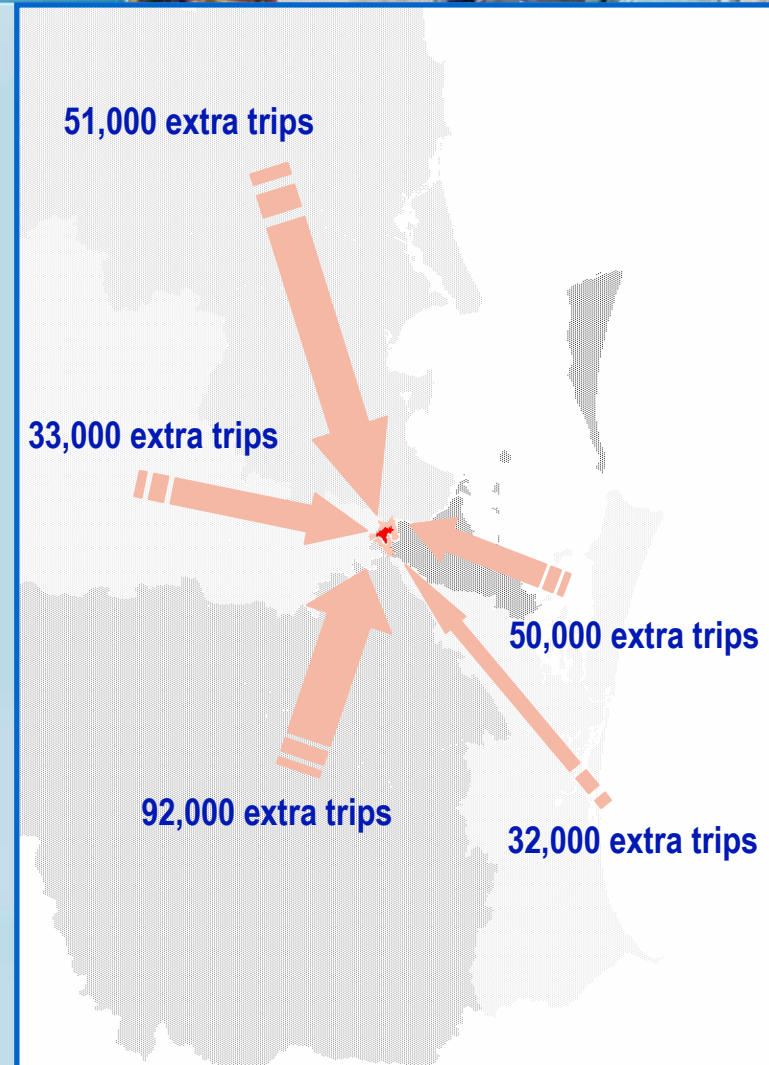




## Two-way trips to the fringe of the CBD

(including Spring Hill, West End, Woolloongabba, Bowen Hills etc)

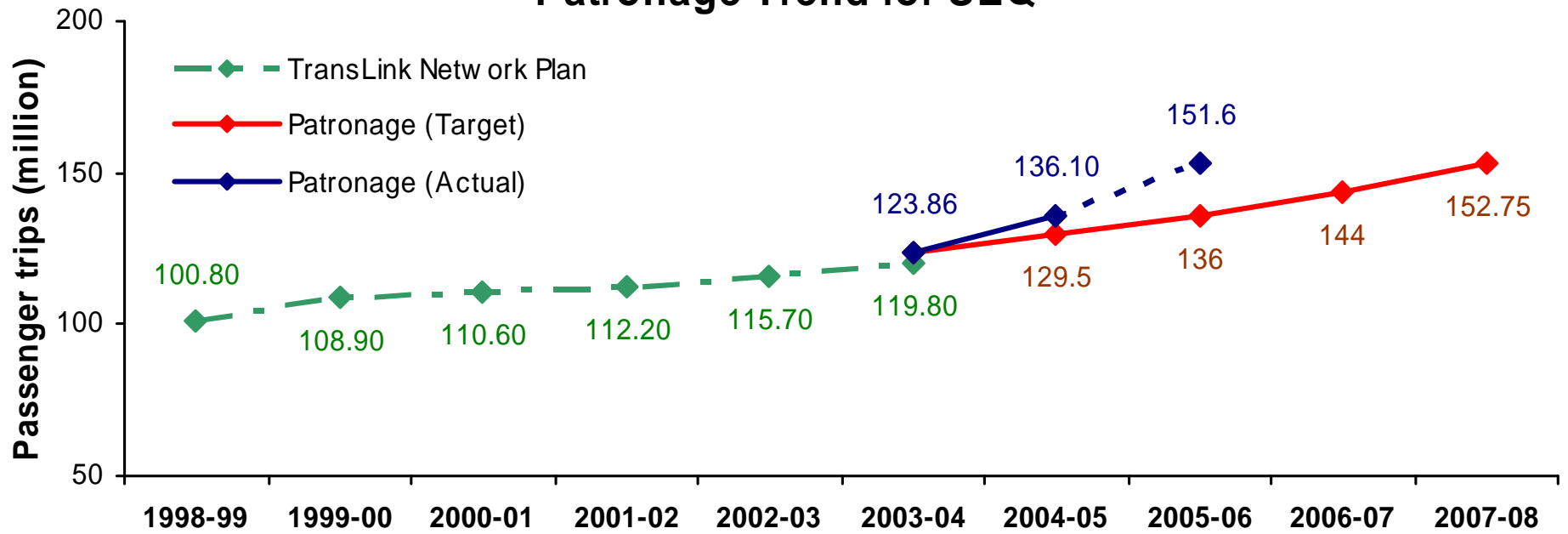
will increase by more than 113%\*.



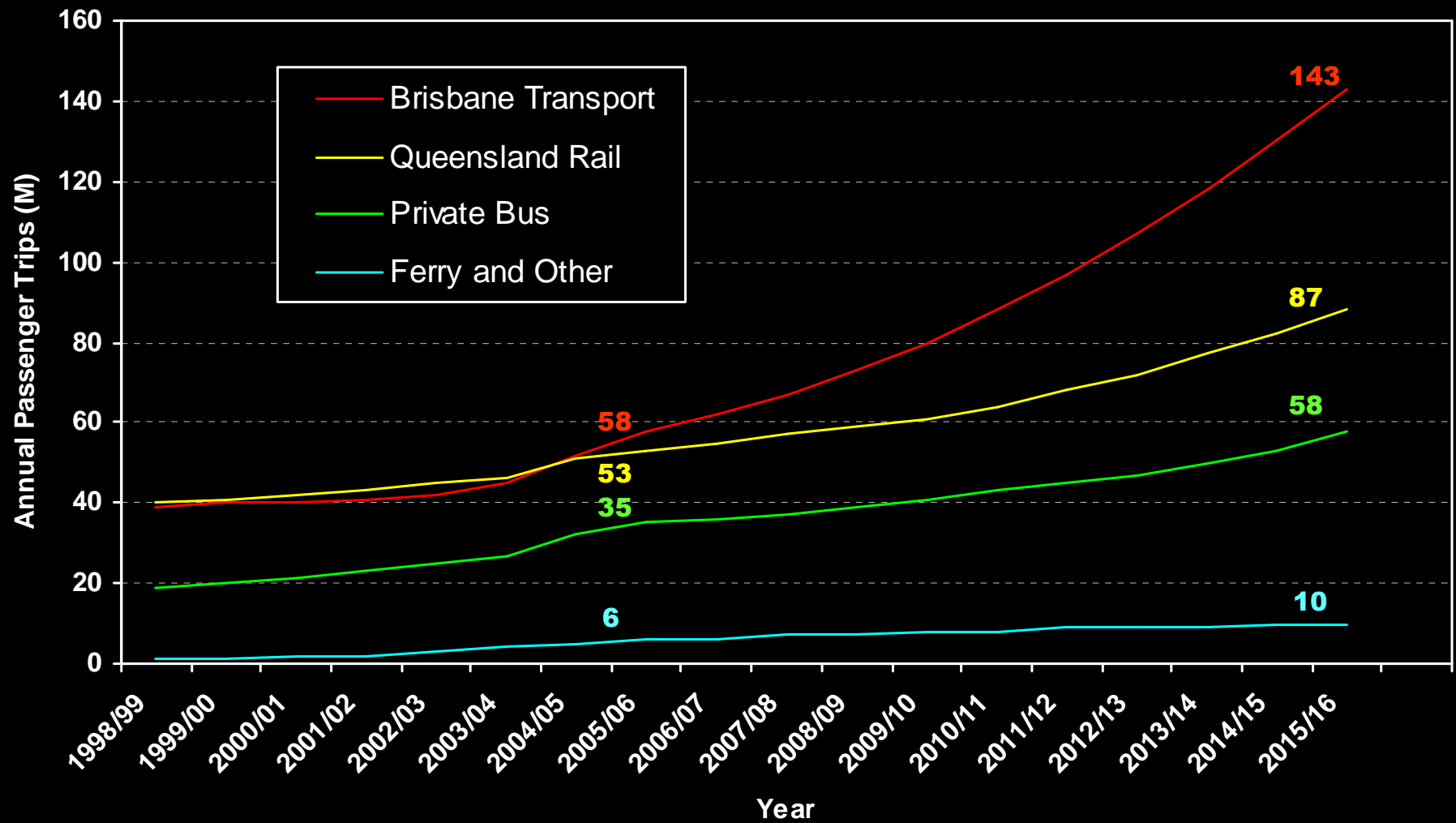
\*Based on 2001 figures



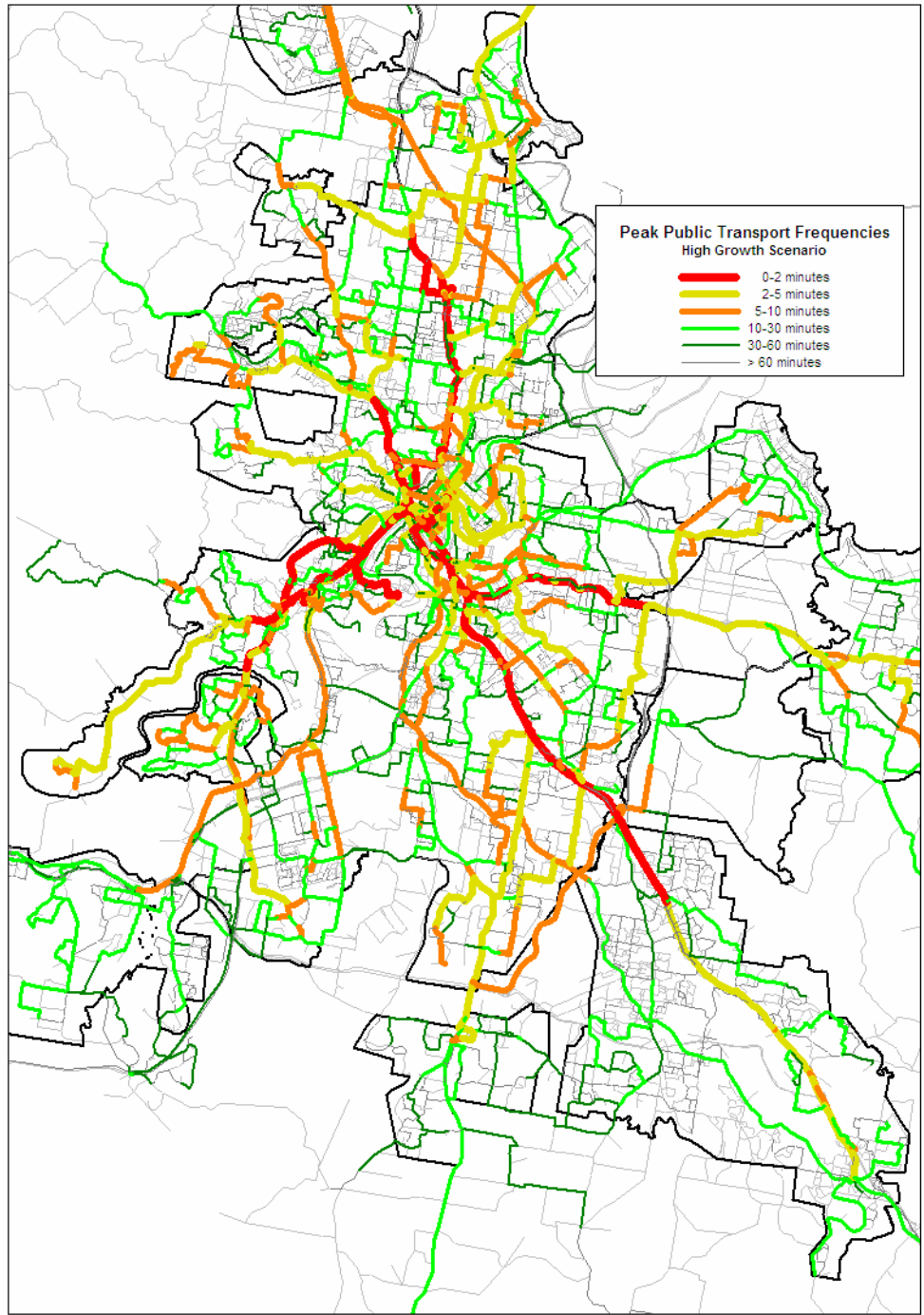
### Patronage Trend for SEQ



Actual (1998/09 - 2005/06) and 2016 Predicted High Growth Scenario (6% p.a) for  
Public Transport by Operator



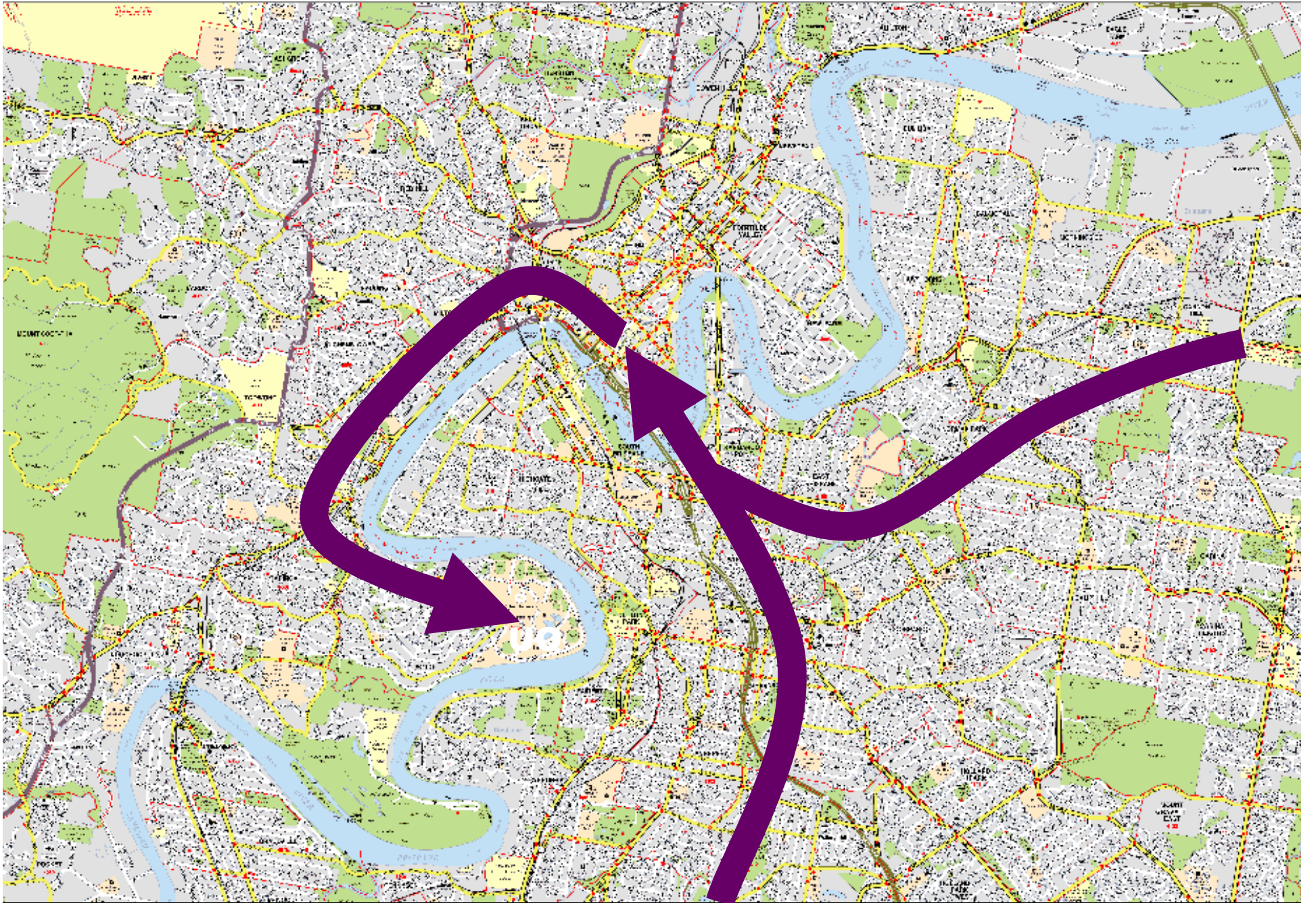






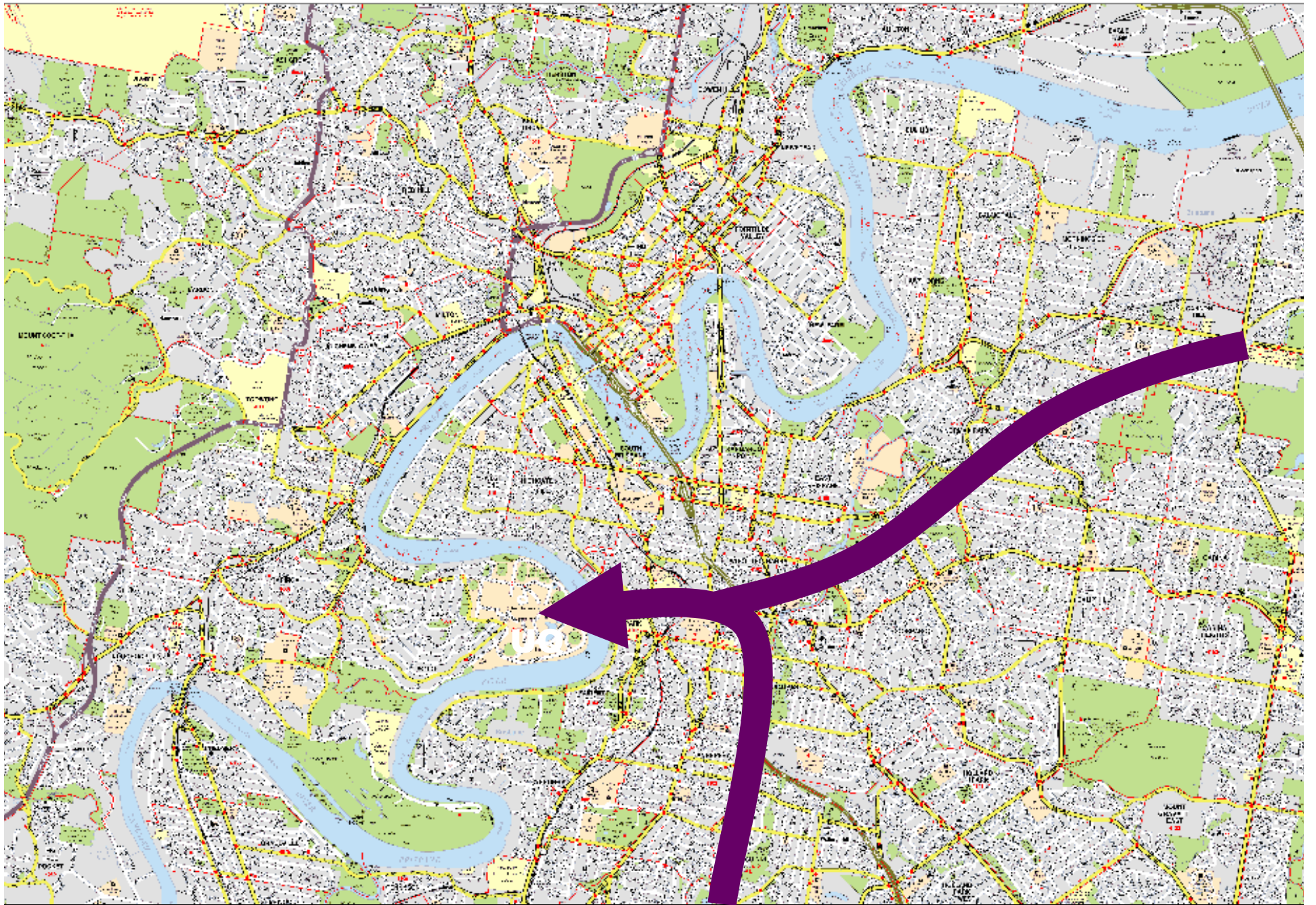
*Eleanor Schonell Bridge (formerly the Green Bridge)*





US













**Mater Hill Station**





**Mater Hill**











Land acquired by Anthony John Group for TOD



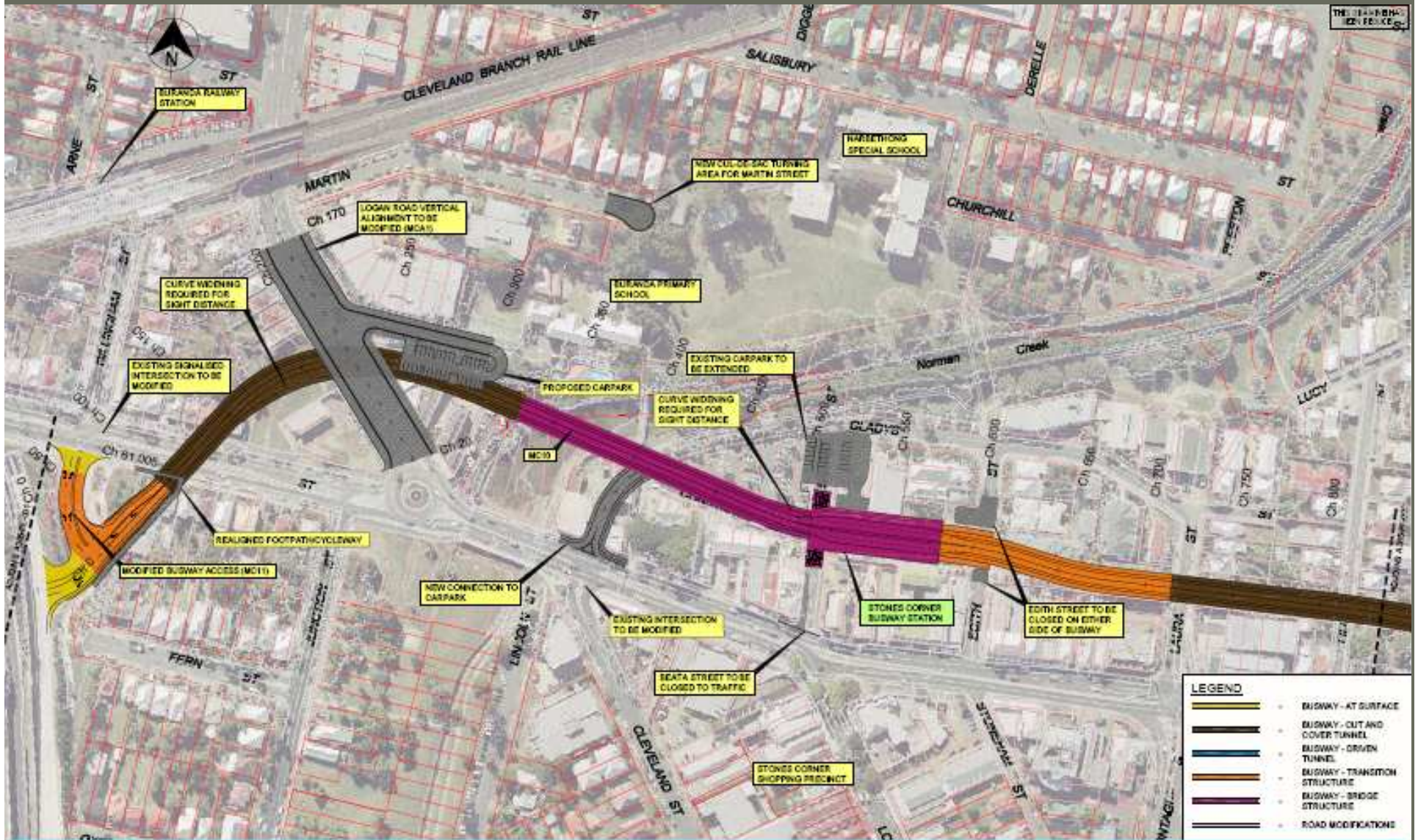
**Buranda**







# Eastern Busway, Stones Corner





# Station integration

## Stones Corner

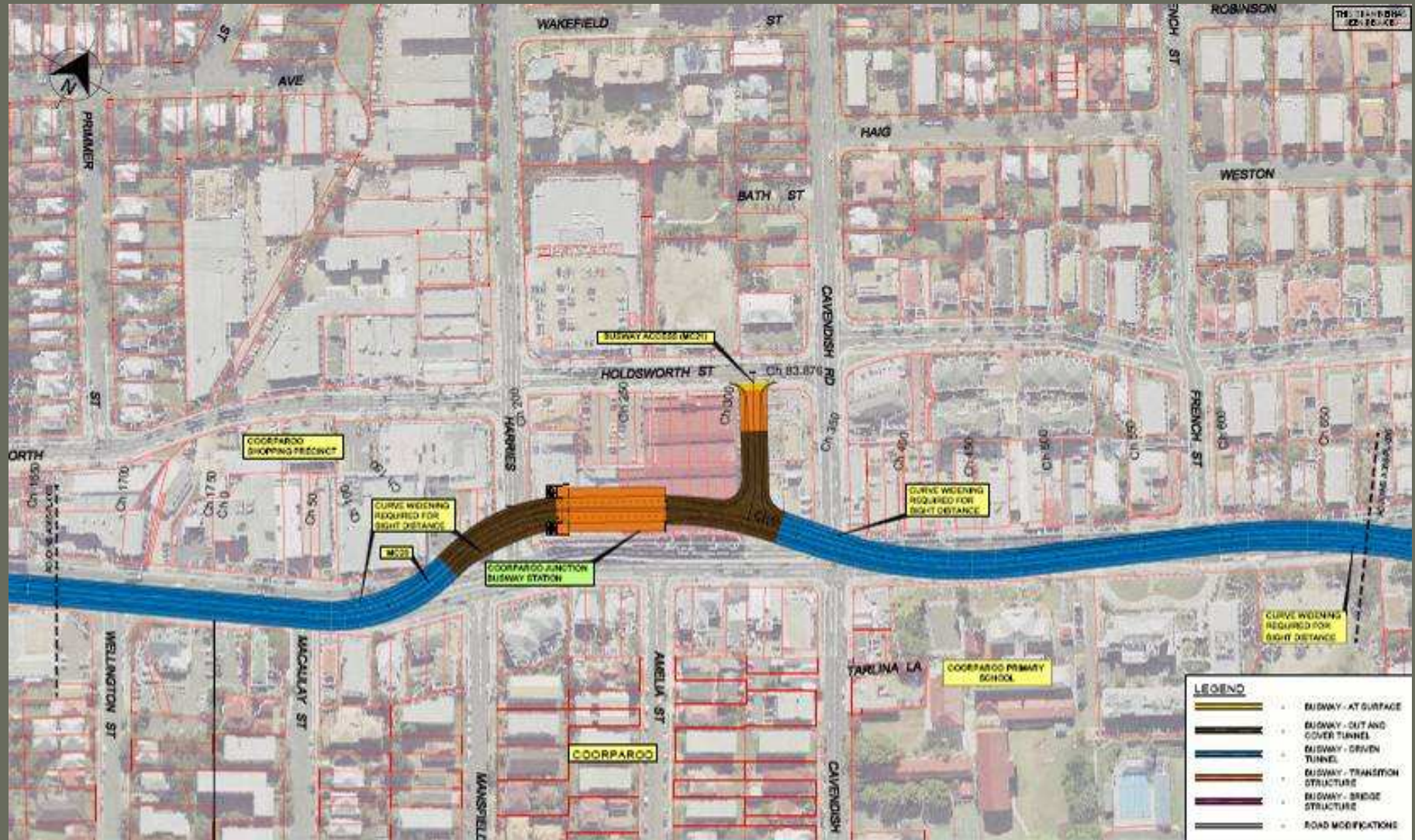
### Concept Plan



- ① Elevated busway covered as urban design feature
- ② Improved parking and pickup / drop off zone for Buranda State School
- ③ New park area with improved pedestrian / cycle links
- ④ Existing car parks retained for local businesses
- ⑤ Elevated Stones Corner Busway Station
- ⑥ New access road to improve car access to this pocket
- ⑦ Edith Street closed to traffic. Landscaped pedestrian plaza
- ⑧ Beats Street closed to traffic. Landscaped pedestrian plaza
- ⑨ Kiss and Ride area
- ⑩ Pedestrian / cycle path connection under Logan Road Bridge



# Coorparoo





# Coorparoo Junction

## Concept Plan

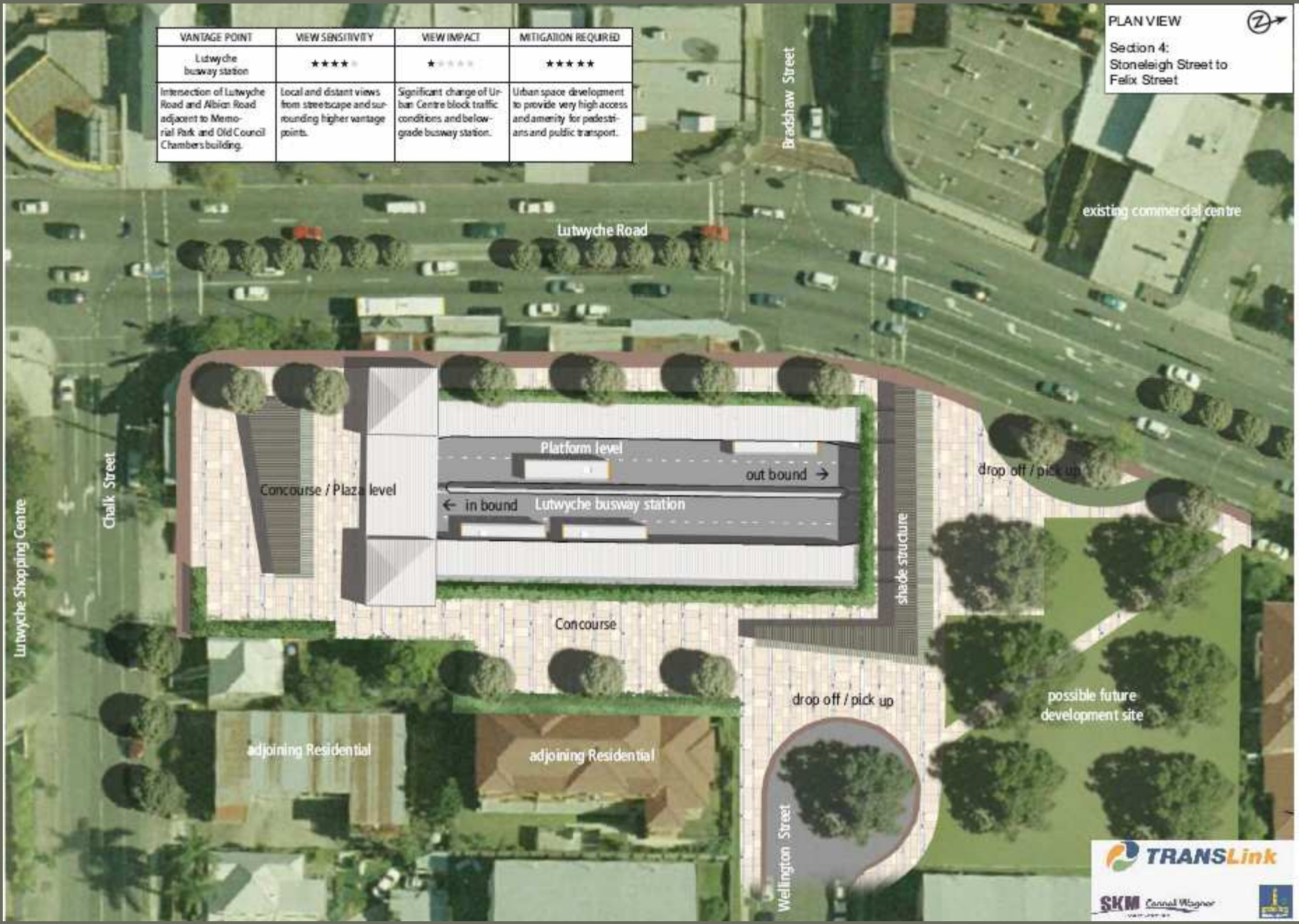


Artist's Impression

- ① Coorparoo Junction Busway Station on the corner of Old Cleveland Road and Harries Road
- ② Local bus access point from Holdsworth Street
- ③ Busway will tunnel below Cavendish Road
- ④ Busway does not impact on Sullivan's building and traditional commercial precinct east of Cavendish Road

VANTAGE POINT	VIEW SENSITIVITY	VIEW IMPACT	MITIGATION REQUIRED
Lutwyche busway station	★★★★	★☆☆☆	★★★★
Intersection of Lutwyche Road and Albin Road adjacent to Memorial Park and Old Council Chambers building.	Local and distant views from streetscape and surrounding higher vantage points.	Significant change of Urban Centre block traffic conditions and below-grade busway station.	Urban space development to provide very high access and amenity for pedestrians and public transport.

PLAN VIEW  
 Section 4:  
 Stoneleigh Street to  
 Felix Street







Eight Mile Plains  
Station

Proposed Rochedale  
Urban Community





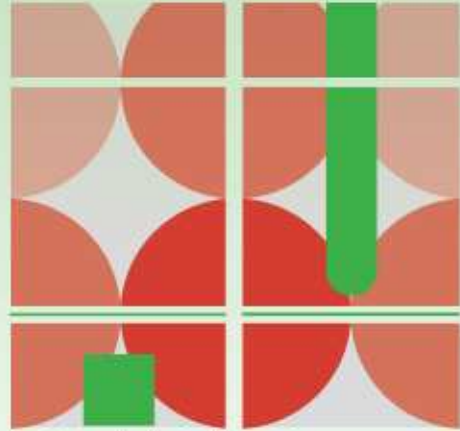








ACNU08



**Brisbane**

**2008 NATIONAL  
CONGRESS OF THE  
AUSTRALIAN COUNCIL  
FOR NEW URBANISM**

6th – 9th February, 2008

